

MONTHLY MEMBERSHIP PROGRESS REPORT

LOCATION MASSACHUSETTS

District 33 S

Results as of: 3/31/2023

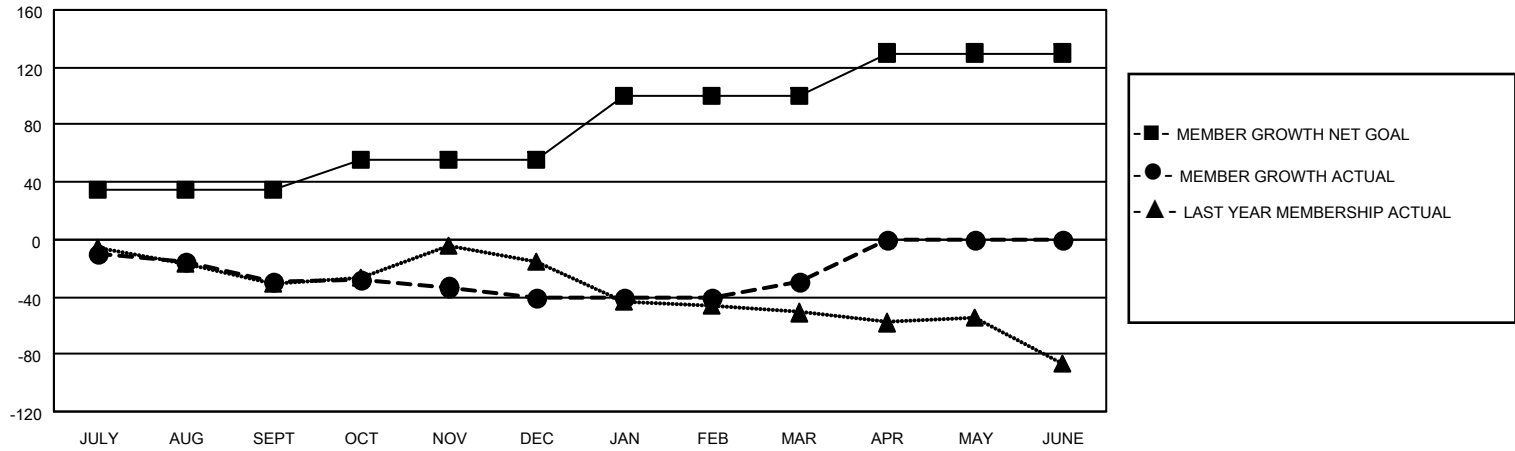
Clubs			
RESULTS FOR 2022-2023			
QUARTER	NEW CLUB GOAL	NEW CLUBS	DROPPED CLUBS
JULY/AUG/SEPT	0	0	0
OCT/NOV/DEC	1	0	0
JAN/FEB/MAR	0	0	0
APR/MAY/JUNE	1	0	0

Members			
RESULTS FOR 2022-2023			
QUARTER	MEMBER GROWTH NET GOAL	MEMBER GROWTH ACTUAL	DROPPED MEMBERS ACTUAL (including transfers)
JULY/AUG/SEPT	35	22	46
OCT/NOV/DEC	20	36	44
JAN/FEB/MAR	45	36	19
APR/MAY/JUNE	30	0	0

GOALS AND ACTUAL NEW CLUBS CUMULATIVE



GOALS AND ACTUAL MEMBERS CUMULATIVE



DROPPED CLUBS: 0

21 CLUBS OF 48 ADDED 1 OR MORE NEW MEMBERS

GENDER DISTRIBUTION

MALE	931 (61.17%)
FEMALE	590 (38.76%)
NON BINARY	0 (0.00%)
PREFER NOT TO ANSWER	1 (0.07%)

DROPPED MEMBERS

[CLICK HERE FOR CUMULATIVE MEMBERSHIP DATA](#)

DECEASED	20
CLUB CANCELLED	0
OTHER	89
TOTAL	109

TOTAL FAMILY UNIT MEMBERS	253
FAMILY MEMBERS PAYING HALF DUES	129